



for Better Quality & Durability

CONSTRUCTION POLYPROPYLENE (PP) FIBRES – CPP24

APPLICATION

These are Polypropylene (PP) synthetic fibers of 24 mm length. These micro fibers are used in concrete mixing machines. They prevent crack formation and provide reinforcement. Maximum size of the aggregate in normal concrete is 19mm (approx.). Being longer than maximum size of aggregate, each and every strand of fiber is effective. CPP24 is used to minimize damage of structures and prevent spalling, in case of fire. Suitable care has been taken to ensure dispersion of fibers. It conforms to ASTM C 1116/C 1116M - 06 4.1.3 Type III & BS EN 14889-2: 2006

DOSAGE

For crack prevention - 600gm/m³ (minimum); **Recommended Dosage** - 900gm/m³

For primary reinforcement (in concrete floors/precast) - Above 1000gm/m³.

For Fire Protection of Concrete - 2.0 kg/m³ (minimum)

Results improve with higher dosage of fiber. Kindly optimize the dosage depending on the requirement.

HOW TO USE?

For Machine mixing - Small quantity of water is dosed in empty drum to clean the drum after each batch. Add fibre in the rotating drum. Then add the chips/sand/cement/water in the concrete mixer and continue normal operation.

For dosing in Ready Mix Truck - Add fibres in small lots in the rotating drum. After dosing is complete allow extra 20-30 revolutions of the drum at maximum RPM.

SPECIFICATION

Material	:	100% virgin Polypropylene (PP)
Length	:	24.0 +/- 0.25 mm
Diameter	:	28 micron (approx.)
Aspect ratio	:	860 (approx.)
Melt Point	:	162 °C
Specific Gravity	:	0.91
Thermal & Electric Conductivity	:	Low
Alkali Resistance	:	100% Alkali Proof
Acid & Salt Resistance	:	High

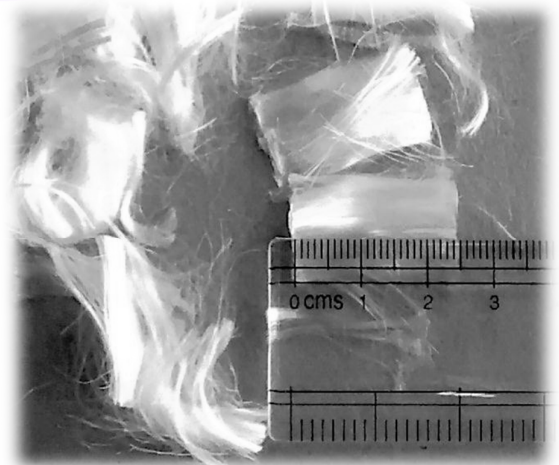


Figure 1 :- CETEX CPP24

Note: Addition of fibers to a given mix may appear to decrease the slump. The workability, however, will not be affected and additional water should not be added.